



# Bolted Plastic Clamp Supports

# TUBE CLAMPS

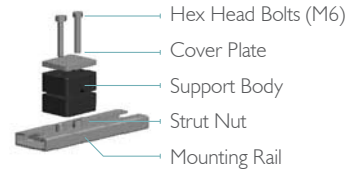
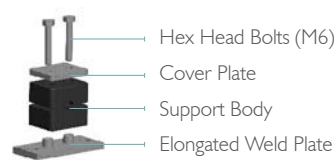


## FLUIDLINE

### Features

- Resists chemical corrosion
- Resists ultraviolet radiation
- Enhance system reliability
- Avoid shake and noises

### Installations



### Technical Specifications

Component	Material	Designator	Temperature Range
Support Body Cover Plate Weld Plate Mounting Rail Mounting Nut	321 SS	S1	up to 426°C
	304 SS	S4	
	316 SS	SS	up to 400°C
	Carbon Steel/ galv	CS	
Inside Lining	Polyformaldehyde	PP	-30C to 90°C
Inside Lining	Polyamide	PA	-40C to 120°C
	Aluminium Alloy	AA	-50C to 300°C

### Dimensions

Tube Size D1 mm (in.)	Basic Order No. (for Standard Weld Plate)	Basic Order No. (for Elongated Weld Plate)	L1	L2	L3	L4	B	D	t
6	-SP-6	-EP-6	36	64	20	50	30	6.5	5
6.35 (1/4)	-SP-6.3	-EP-6.3							
8	-SP-8	-EP-8							
9.5 (3/8)	-SP-9.5	-EP-9.5							
10	-SP-10	-EP-10							
12	-SP-12	-EP-12							
12.7 (1/2)	-SP-12.7	-EP-12.7							
15	-SP-15	-EP-15	42	70	26	56			
15.9 (5/8)	-SP-15.9	-EP-15.9							
16	-SP-16	-EP-16							
18	-SP-18	-EP-18							
20	-SP-20	-EP-20							
22	-SP-22	-EP-22							
22.23 (7/8)	-SP-22.2	-EP-22.2	50	78	33	64			
25	-SP-25	-EP-25							
25.4 (1)	-SP-25.4	-EP-25.4							
28	-SP-28	-EP-28							
31.8 (1 1/4)	-SP-31.8	-EP-31.8							
32	-SP-32	-EP-32							
35	-SP-35	-EP-35	60	87	40	73			
38.1 (1 1/2)	-SP-38.1	-EP-38.1							
40	-SP-40	-EP-40							
42	-SP-42	-EP-42							
44.45 (1 3/4)	-SP-44.5	-EP-44.5							
50.8	-SP-50.8	-EP-50.8							
50.8	-SP-50.8	-EP-50.8	71	100	52	86			
50.8	-SP-50.8	-EP-50.8							
50.8	-SP-50.8	-EP-50.8							
50.8	-SP-50.8	-EP-50.8							
50.8	-SP-50.8	-EP-50.8							
50.8	-SP-50.8	-EP-50.8							
50.8	-SP-50.8	-EP-50.8	88	115	66	100			
50.8	-SP-50.8	-EP-50.8							
50.8	-SP-50.8	-EP-50.8							
50.8	-SP-50.8	-EP-50.8							
50.8	-SP-50.8	-EP-50.8							
50.8	-SP-50.8	-EP-50.8							

### Ordering Information:

TCS-single, TCD-double tube clamps.

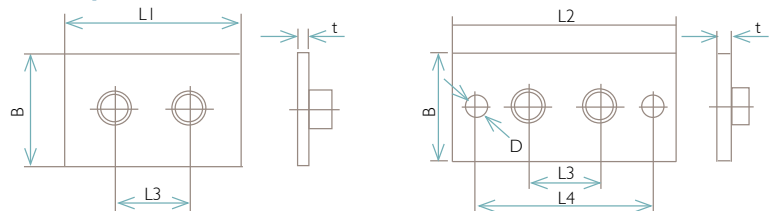
Add material designator as a prefix to the basic ordering number to complete ordering number. For example: S4-TCS-PP-SP-32.

Fluidline is a leading supplier of high quality fluid system components to the instrumentation, mechanical and general industrial markets.

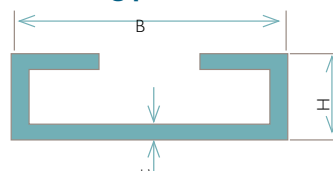
Fluidline represents reputable manufacturers worldwide and boasts a sales team with comprehensive and extensive experience in the field.

Reputed for reliability and service excellence Fluidline's Internal investments which include substantial inventories, distribution network and an in-house delivery service, ensure the right product gets to the right customer on time, every time.

#### Weld plate



#### Mounting plate



Basic Ordering Number	t	B	H	Length (mm)
-MR-L	2	36	11	L (on request)

## Technical Information

Mechanical Properties	Polypropylene (PP)	Polyamide 6 (PA 6)	Aluminium	Rubber
Density	0,906 g/cm <sup>3</sup>	1,12 – 1,15 g/cm <sup>3</sup>	2,65 g/cm <sup>3</sup>	0,98 g/cm <sup>3</sup>
Flexural Deflection	36 N/mm <sup>2</sup>	130 – 200 N/mm <sup>2</sup>	70 N/mm <sup>2</sup>	—
Impact Resistance	no break	no break	—	—
Compressive Strength	90 N/mm <sup>2</sup>	120 N/mm <sup>2</sup>	HB 500...600 N/mm <sup>2</sup>	shore
Modulus of Elasticity	1500 N/mm <sup>2</sup>	3000 N/mm <sup>2</sup>	70.0000 N/mm <sup>2</sup>	—
Tensile Strength without reavage	25 – 35 N/mm <sup>2</sup>	80 – 90 N/mm <sup>2</sup>	180 N/mm <sup>2</sup>	8,5 N/mm <sup>2</sup>
Thermal Properties				
Temp. Resistance	– 30 up to + 90°C	– 40 up to + 120°C	300°C	– 50 up to + 120°C
Chemical Properties				
Weak Acids	limited resistant	limited resistant	—	resistant
Weak Alkalis	limited resistant	imited resistant	—	resistant
Alcohol	resistant	resistant	—	resistant
Petrol limited	resistant	resistant	—	limited resistant
Mineral Oils	limited resistant	resistant	—	resistant
Other Oils	resistant	resistant	—	resistant

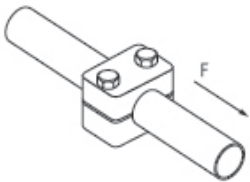
*Other materials on request.*

The outlined particulars are approximate values and are only valid as references, which are not binding, also with regard to possible protection of third parties, and they do not exempt you from your own examination of suitability of the products delivered by us. Therefore, these values can only be used in a limited sense for construction purposes. The application of the products is carried out outside our control possibilities and, therefore, is exclusively subject to your own area of responsibility. If, however, liability should be possible, it would be limited for all damages to the value of the goods supplied by us and in use by you. It goes without saying, that we guarantee the perfect quality of our products according to our general sales and delivery conditions.

### Screw Tightening Torque and axial Pipe Shearing Forces

The indicated screw tightening torque and axial pipe shearing forces refer to the assembly with cover plates and outside hexagon bolts according to DIN 931/933. The axial pipe shearing force (according to DIN 3015, part 10) is an average value, determined by three tests made with a steel pipe according to DIN 2448 of St 37, for which static friction is presupposed (temperature during tests: 23°C). When loading the clamp with the indicated test force (F) in axial pipe direction, the pipe does not slide in the clamp.

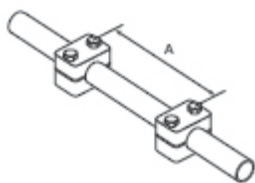
Light series (DIN 3015, part 1)



Size	Fixing screw	Polypropylene		Polyamide		Aluminium	
		torque (Mn)	force F (kN)	torque (Mn)	force F (kN)	torque (Mn)	force F (kN)
0	M6	8	0,6	10	0,6	—	—
1	M6	8	1,1	10	0,7	12	4,2
2	M6	8	1,2	10	0,8	12	4,3
3	M6	8	1,4	10	1,6	12	4,8
4	M6	8	1,5	10	1,7	12	5,0
5	M6	8	1,9	10	2,0	12	7,3
6	M6	8	2,0	10	2,5	12	8,9

### Recommended Clamp Pitch

The clamp pitches assigned to the respective outside pipe diameters are standard values for static load.



Outside pipe diameter (mm)	Clamp pitch A(m)
6,0 – 12,7	1,0
12,7 – 22,0	1,2
22,0 – 32,0	1,5
32,0 – 38,0	2,0
38,0 – 57,0	2,7
57,0 – 75,0	3,0
75,0 – 76,1	3,5
76,1 – 88,9	3,7
88,9 – 102,0	4,0
102,0 – 114,0	4,5
114,0 – 168,0	5,0
168,0 – 219,0	6,0

### Pipe Bend Assembly

Pipe bends must be fixed with pipe clamps immediately in front of and behind the bend.

### Used Materials

- Rubber only available for light series and double clamps, inside smooth and heavy series grooved design.
- Aluminium only available for light series size 1 to 6 and heavy series size 1 to 8
- Smooth interior surface in heavy series only size 4
- Aluminium clamps only available in a grooved design
- Inside smooth light series only size 1 to 6



For more information contact our sales team on:

Tel +27(0)11 312 9339 Fax +27(0)11 312 9338

Email ram@fluidline.co.za or [www.fluidline.co.za](http://www.fluidline.co.za)

Sharecall: 08600 FLUID