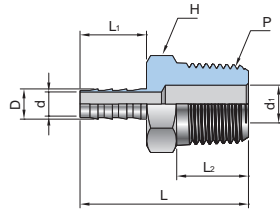
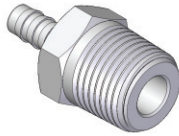


Easy and quick installation
for soft plastic or rubber hose

Hose Connectors

Hose Male Connector UHMC



Connects Hose to Female Pipe

Part No.	Hose I.D.	P	Dimensions (inch)						
			D	d	d ₁	H	L	L ₁	L ₂
UHMC-02H02N	1/8	1/8	0.15	0.08	0.19	7/16	1.08	0.40	0.38
UHMC-02H04N	1/8	1/4	0.15	0.08	0.28	9/16	1.26	0.40	0.56
UHMC-03H02N	3/16	1/8	0.23	0.12	0.12	7/16	1.27	0.59	0.38
UHMC-03H04N	3/16	1/4	0.23	0.12	0.28	9/16	1.45	0.59	0.56
UHMC-04H02N	1/4	1/8	0.30	0.19	0.19	7/16	1.47	0.79	0.38
UHMC-04H04N	1/4	1/4	0.30	0.19	0.19	9/16	1.65	0.79	0.56
UHMC-04H06N	1/4	3/8	0.30	0.19	0.19	11/16	1.66	0.79	0.56
UHMC-04H08N	1/4	1/2	0.30	0.19	0.47	7/8	1.85	0.79	0.75
UHMC-05H02N	5/16	1/8	0.38	0.19	0.19	7/16	1.55	0.87	0.38
UHMC-05H04N	5/16	1/4	0.38	0.19	0.19	9/16	1.73	0.87	0.56
UHMC-05H06N	5/16	3/8	0.38	0.19	0.19	11/16	1.74	0.87	0.56
UHMC-05H08N	5/16	1/2	0.38	0.19	0.47	7/8	1.96	0.87	0.75
UHMC-06H04N	3/8	1/4	0.45	0.30	0.30	9/16	1.73	0.87	0.56
UHMC-06H06N	3/8	3/8	0.45	0.30	0.30	11/16	1.74	0.87	0.56
UHMC-06H08N	3/8	1/2	0.45	0.30	0.30	7/8	1.96	0.87	0.75
UHMC-08H04N	1/2	1/4	0.60	0.38	0.28	11/16	1.80	0.94	0.56
UHMC-08H06N	1/2	3/8	0.60	0.38	0.38	11/16	1.81	0.94	0.56
UHMC-08H08N	1/2	1/2	0.60	0.38	0.38	7/8	2.03	0.94	0.75
UHMC-10H08N	5/8	1/2	0.75	0.47	0.47	1-1/16	2.07	0.98	0.75
UHMC-10H12N	5/8	3/4	0.75	0.50	0.63	1-1/16	2.07	0.98	0.75
UHMC-12H08N	3/4	1/2	0.90	0.63	0.47	1-1/16	2.14	1.05	0.75
UHMC-12H12N	3/4	3/4	0.90	0.63	0.63	1-1/16	2.14	1.05	0.75
UHMC-12H16N	3/4	1	0.90	0.63	0.88	1-3/8	2.43	1.05	0.94
UHMC-16H12N	1	3/4	1.20	0.88	0.63	1-3/8	2.38	1.19	0.75
UHMC-16H16N	1	1	1.20	0.88	0.88	1-3/8	2.57	1.19	0.94

How To Order

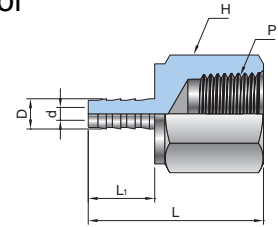
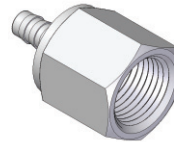
Standard materials is 316SS. To order, add - SS to the end of part number.

Example : UHMC-08H08N-SS

Cleaning

Uni-Lok fittings are free from machine oils, loose particles and grease throughout the close cleaning process.

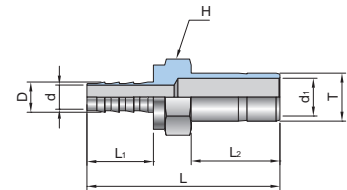
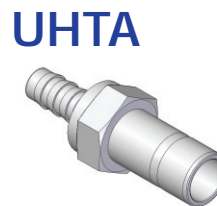
Hose Female Connector UHFC



Connects Hose to Male Pipe

Part No.	Hose I.D.	P	Dimensions (inch)				
			D	d	H	L	L ₁
UHFC-02H02N	1/8	1/8	0.15	0.08	9/16	1.11	0.40
UHFC-02H04N	1/8	1/4	0.15	0.08	3/4	1.26	0.40
UHFC-03H02N	3/16	1/8	0.23	0.12	9/16	1.29	0.59
UHFC-03H04N	3/16	1/4	0.23	0.12	3/4	1.44	0.59
UHFC-04H02N	1/4	1/8	0.30	0.19	9/16	1.47	0.79
UHFC-04H04N	1/4	1/4	0.30	0.19	3/4	1.64	0.79
UHFC-04H06N	1/4	3/8	0.30	0.19	7/8	1.71	0.79
UHFC-05H04N	5/16	1/4	0.38	0.19	3/4	1.73	0.87
UHFC-05H06N	5/16	3/8	0.38	0.19	7/8	1.82	0.87
UHFC-06H04N	3/8	1/4	0.45	0.30	3/4	1.69	0.87
UHFC-06H06N	3/8	3/8	0.45	0.30	7/8	1.78	0.87
UHFC-06H08N	3/8	1/2	0.45	0.30	1-1/16	2.03	0.87
UHFC-08H08N	1/2	1/2	0.60	0.38	1-1/16	2.13	0.94

Hose Tube Adapter UHTA



Connects Hose to Uni-Lok Tube Fitting

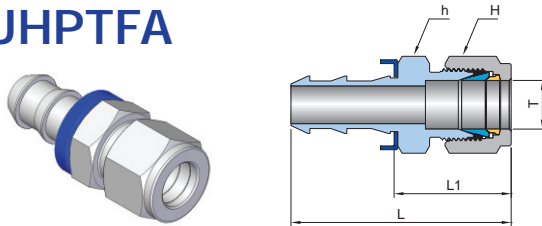
Part No.	Hose I.D.	Tube O.D. T	Dimensions (inch)						
			D	d	d ₁	H	L	L ₁	L ₂
UHTA-02H02T	1/8	1/8	0.15	0.08	0.09	5/16	1.35	0.40	0.53
UHTA-02H04T	1/8	1/4	0.15	0.08	0.19	3/8	1.44	0.40	0.62
UHTA-04H04T	1/4	1/4	0.30	0.19	0.19	7/16	1.83	0.79	0.62
UHTA-04HM06T	1/4	6mm	0.30	0.19	0.18	7/16	1.86	0.79	0.62
UHTA-04H06T	1/4	3/8	0.30	0.19	0.28	7/16	1.90	0.79	0.69
UHTA-05H04T	5/16	1/4	0.37	0.19	0.19	7/16	1.91	0.87	0.62
UHTA-06H06T	3/8	3/8	0.45	0.30	0.28	9/16	1.98	0.87	0.69
UHTA-06H08T	3/8	1/2	0.45	0.30	0.39	5/8	2.20	0.87	0.91
UHTA-08H06T	1/2	3/8	0.60	0.38	0.28	11/16	2.05	0.94	0.69
UHTA-08H08T	1/2	1/2	0.60	0.38	0.39	11/16	2.27	0.94	0.91
UHTA-12H12T	3/4	3/4	0.90	0.63	0.59	1-1/16	2.44	1.05	0.97

Dimensions are for reference only and are subject to change without prior notice.

Push-On Hose Fittings

Easy and quick installation
for soft plastic or rubber hose

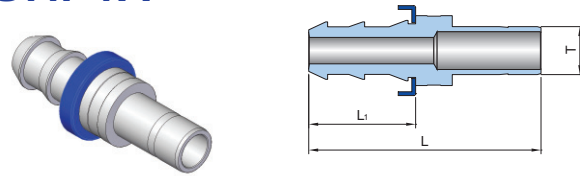
Push-On Hose Tube Fitting Adapter UHPTFA



Connects Hose to Tube

Part No.	Hose I.D.	Tube O.D. T	Dimensions (mm)			
			H	h	L	L ₁
UHPTFA-04H04	1/4	1/4	9/16	9/16	50.0	30.7
UHPTFA-06H06	3/8	3/8	11/16	11/16	53.6	31.5
UHPTFA-08H08	1/2	1/2	7/8	7/8	62.7	36.1

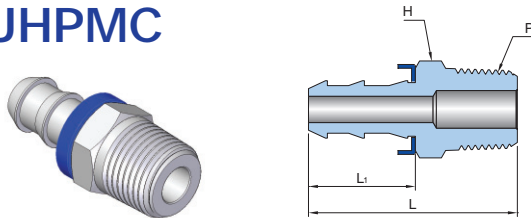
Push-On Hose Tube Adapter UHPTA



Connects Hose to Uni-Lok Tube Fitting

Part No.	Hose I.D.	Tube O.D. T	Dimensions (mm)	
			L	L ₁
UHPTA-04H04T	1/4	1/4	49.0	29.7
UHPTA-06H06T	3/8	3/8	51.6	29.5
UHPTA-08H08T	1/2	1/2	62.7	36.1
UHPTA-12H12T	3/4	3/4	79.8	37.6

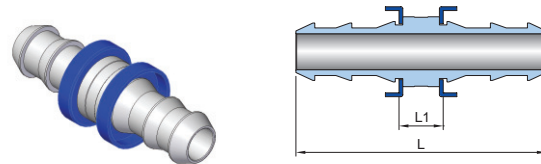
Push-On Hose Male Connector UHPMC



Connects Hose to Male Pipe

Part No.	Hose I.D.	P	Dimensions (mm)		
			H	L	L ₁
UHPMC-04H04	1/4	1/4	9/16	42.7	23.4
UHPMC-06H04	3/8	1/4	11/16	45.7	23.6
UHPMC-06H06	3/8	3/8	11/16	45.7	23.6
UHPMC-08H08	1/2	1/2	7/8	55.6	29.0
UHPMC-12H12	3/4	3/4	1-1/16	71.4	29.2

Push-On Hose Straight Union UHPSU



Connects Hose

Part No.	Hose I.D.	Tube O.D. T	Dimensions (mm)	
			L	L ₁
UHPSU-04H04H	1/4	1/4	52.6	14.0
UHPSU-06H06H	3/8	3/8	57.2	13.0
UHPSU-08H08H	1/2	1/2	69.4	13.0
UHPSU-12H12H	3/4	3/4	100.8	13.0

How To Order

Standard materials is 316SS. To order, add - SS to the end of part number.

Example : UHPTFA-08H08T-SS

Cleaning

Uni-Lok fittings are free from machine oils, loose particles and grease throughout the close cleaning process.

Dimensions are for reference only and are subject to change without prior notice.

Uni-Lok® Uni-Lok corporation



CONNECTS THE WORLD SINCE 1984 www.unilok.com

본사 및 제1공장

인천광역시 남동구 고잔동 725-13번지
남동공단 152블럭 12롯데 ☎ 405-822
전화 : 032-822-6600
팩스 : 032-822-6604

제2공장

인천광역시 남동구 고잔동 684-7번지
남동공단 114블럭 8롯데 ☎ 405-818
전화 : 032-433-6601
팩스 : 032-441-7600

Headquarters & 1st Factory

152 Block-12 Lot, Namdong Indus-Park, 725-13,
Gojan-Dong, Namdong-Gu, Incheon, Korea
Tel : +82-32-821-6673
Fax : +82-32-822-6604

2nd Factory

114 Block-8 Lot, Namdong Indus-Park, 684-7,
Gojan-Dong, Namdong-Gu, Incheon, Korea
Tel : +82-32-433-6601
Fax : +82-32-441-7600